



## INTEGRATED SECURITY MONITORING SOFTWARE



### FEATURES

- Central monitoring and management of events and alarms from various security subsystems, at one or more sites; through one software Graphical User Interface (GUI)
- Supports interface with Intellex® Digital Video Management System, American Dynamics Matrix Switchers, and CCURE® 800
- Central integration of security systems eliminates upgrading all interfaces, as additional security systems are added to the network
- Integration of security subsystems over LAN, WAN, or Internet
- Interactive visual modeling and mapping of the facility provides for an intuitive tool to integrate devices such as cameras and sensors
- Organization of cameras by locations in both list view and map view
- View up to 16 live cameras from one or multiple Intellex units
- Provides secured remote access to the web-based system, by username and password
- Supports interface to popular fire and burglary receiver/panel subsystems

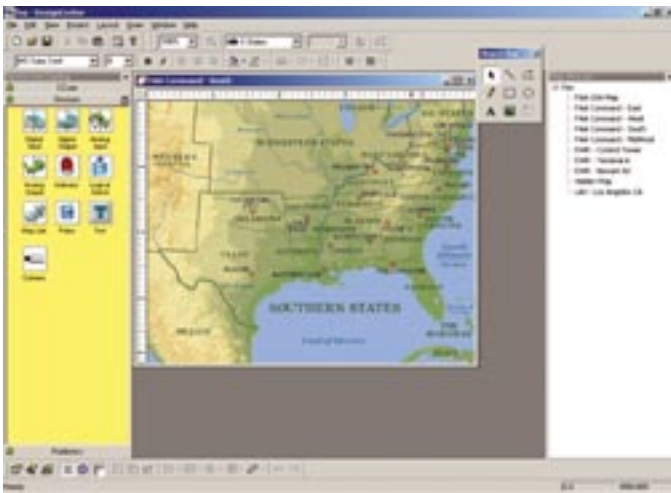
ControlZone Integrated Security Monitoring software provides centralized integration of various types of security subsystems – Intellex, American Dynamics Matrix Switchers, and Software House CCURE 800; over one network. ControlZone also interfaces with subsystems from other manufacturers of matrix switchers, cameras, fire and burglary receiver/panels. The web-based interface for administration and management includes a visual model of security facility which allows authorized users to access the system from any computer on the network and immediately get all information that they need about the events that are taking place at any given location. This provides security personnel for airports, office buildings, school campuses, and multi store retailers with a flexible tool to monitor their facility and respond to alarms and events, in real time.

ControlZone is a windows-based and web-based client/server software solution that is installed and setup in one server and can be accessed from unlimited number of workstations over a network. Administrators can build an interactive visual model of the facility and then upload it as a website. Without having to load any software on their workstations, security personnel can access the website, monitor the facility, and take actions on events and alarms from any workstation on the network. Whether the cameras and sensors are in one location or several locations, ControlZone's interactive visual model of the facility provides easy tools for navigating through multiple locations by simply selecting the appropriate maps and device icons.

## FEATURES

ControlZone features a visual facility modeling editor called ControlZone DesignCenter. Using ControlZone DesignCenter, integrators and administrators import maps and insert device icons to build an interactive visual model of the facility, and then build the automation rules among the devices. The interface between ControlZone and each of the subsystems such as the Intellex is established via ControlZone ActiveNode.

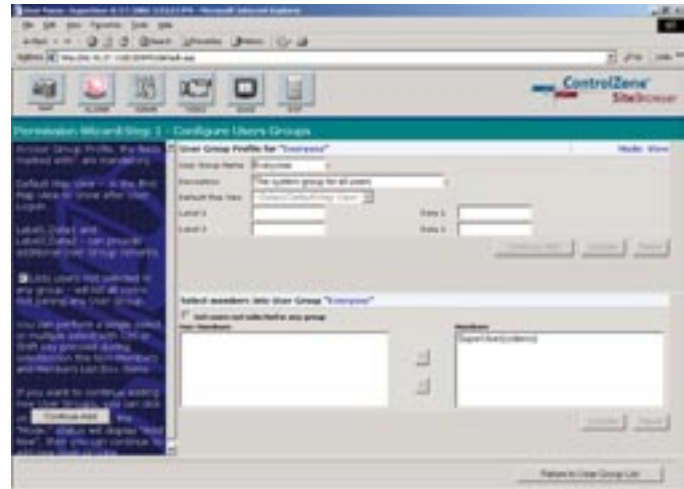
Once the interactive visual facility is built, it is activated as a website. Administrators will be able to setup user accounts and privileges using the ControlZone SiteAdmin and security personnel will be able to access ControlZone and manage the facility using ControlZone SiteBrowser.



### ControlZone DesignCenter

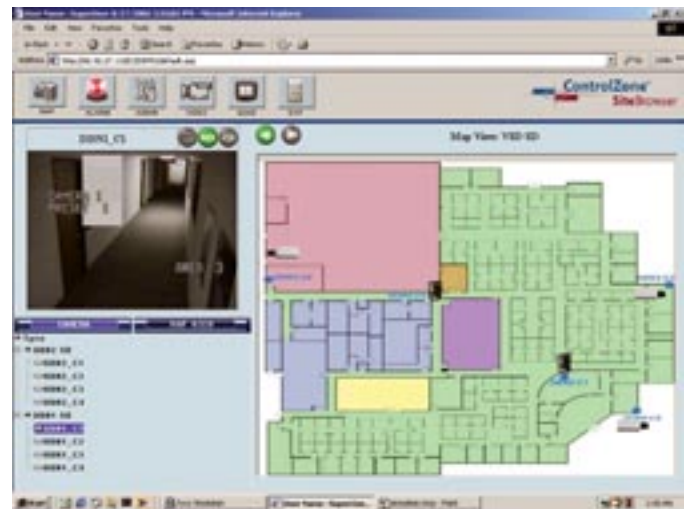
The ControlZone DesignCenter is a software editor for building a web-enabled interactive visual facility. Administrators create a new project, import electronic maps in bitmap, JPEG, or TIF format, insert interactive device icons from the library of devices, and build automation rules among the devices that perform certain functions, based on schedules or events/alarms. Once the interactive visual facility project is built, it is uploaded as a website using Microsoft's Internet Information Services (IIS) web server software.

DesignCenter can also be installed on other computers allowing system integrators to build or update the interactive visual facility at their office and then import it to the customer's ControlZone server.



### ControlZone SiteAdmin

With ControlZone SiteAdmin administrators can facilitate the security of ControlZone by setting up devices, device groups, users, user groups; and assign user-ids and passwords. Access to the event logs and system configuration settings of ControlZone is also managed through the ControlZone SiteAdmin. Only those with administrative user-id and passwords will be able to access the ControlZone SiteAdmin web pages.



### ControlZone SiteBrowser

ControlZone SiteBrowser is the interface to the website that displays the interactive visual facility. Once security personnel and all other users log on to ControlZone SiteBrowser, they can monitor the facility, look at different cameras, perform dome control, view alarms as well as respond to and take actions on alarms that are being reported by ControlZone.

### ControlZone ActiveNode

The ControlZone ActiveNode is the software interface engine that actually runs the rules created in the DesignCenter for interfacing with all the subsystems. The ActiveNode does not have a GUI and is transparent to the user. Each subsystem requires its own ActiveNode. Finite number of ActiveNodes licenses are included in the starter pack and are installed on the ControlZone server. Additional ActiveNodes licenses are installed either on the ControlZone server or on another computer depending on the types and locations of the subsystems.

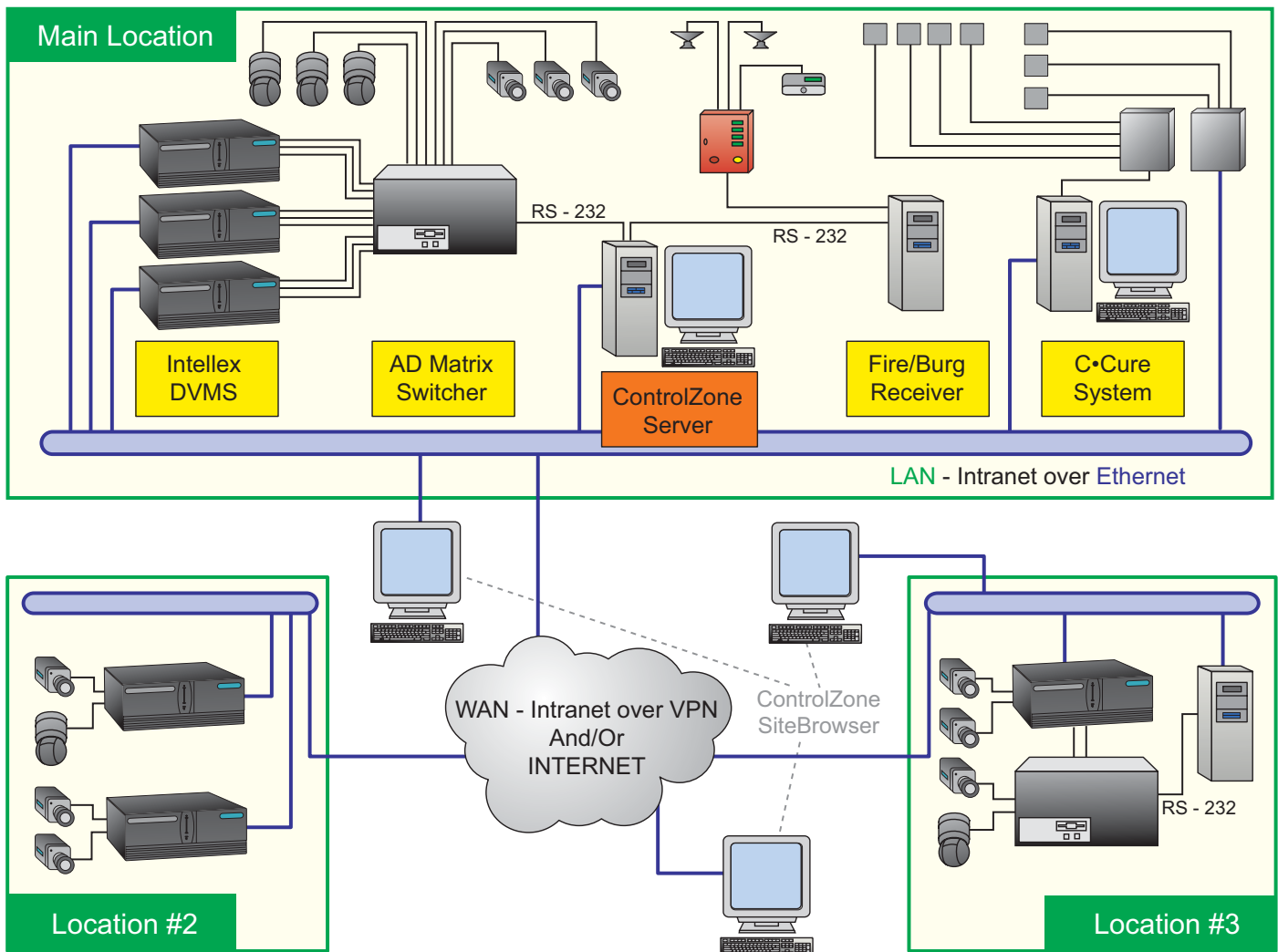
There is one type of ActiveNode for each type of subsystem; furthermore, for each subsystem that ControlZone interfaces with, one ControlZone ActiveNode license must be obtained.

### Connectivity

All security subsystems can communicate with the ControlZone server via a serial RS-232 connection or network connection. The ActiveNodes for all the subsystems in the same location, are installed on the ControlZone server, regardless of the quantity.

In all other locations, the ActiveNodes for the subsystems that can communicate with the ControlZone server over TCP/IP Network can also be installed in the ControlZone server; however, at least one PC is required at each location to run the ActiveNodes for the subsystems that cannot connect to the ControlZone server over a TCP/IP network.

## BASIC SYSTEM DIAGRAM



## SPECIFICATIONS

### Model Numbers

CZStart-22	ControlZone Starter package – includes (five) interchangeable ActiveNode Licenses, and (two) days of mandatory training, (one) year technical support
CZAN-A1	ControlZone ActiveNode License – for additional Tyco subsystem (except for Intellex)
CZAN-B1	ControlZone ActiveNode License – for additional Intellex subsystem
CZAN-C1	ControlZone ActiveNode License – for additional 3rd party subsystem

### Operational

Access via SiteBrowser and SiteAdmin	LAN, WAN, Internet
Language	English
Compatibility with Tyco products	
Digital Video Recorders	Intellex v2.1 and greater
CCTV Matrix Switches	AD1024, AD168, MP48, VM96
Domes	SpeedDome Ultra and Optima
Access Control	Software House C•CURE 800 5.x – 7.2

### Minimum System Requirements

Server computer running ControlZone	
Processor	.600 MHz Intel® Pentium® III or greater
Hard Drive	.10 GB
Memory	.256 MB (512 MB recommended)
Network Card	.10BaseT or 100BaseTX
CD-ROM Drive	.8x minimum
Floppy Drive	.3.5"
Ports	.1 LPT (parallel port) 1 COM (serial port or USB port)

Operating System	Microsoft Windows® 2000 Server with Service Pack 2, Microsoft Windows NT® 4.0 Server with Service Pack 4 or 5
Web Server	Microsoft IIS with Option Pack 4
Mouse, Keyboard, Monitor	
Client computer running SiteBrowser or SiteAdmin	
Processor	.400 MHz Intel Pentium III or greater
Hard Drive	.10 GB
Memory	.64 MB (128 MB recommended)
Network Card	.10BaseT or 100BaseTX
Operating System	Microsoft Windows NT 4.0, Windows 98 SE, Windows ME or Windows 2000
Browser Software	Microsoft Internet Explorer 5.0 or greater
Mouse, Keyboard, Monitor	

Computer running ActiveNodes in other locations (when required)	
Processor	.450 MHz Intel Pentium III or greater
Hard Drive	.8 GB
Memory	.128 MB (256 MB recommended)
Network Card	.10BaseT or 100BaseTX
Ports	.1 COM port (serial port or USB port)
Operating System	Microsoft Windows NT 4.0, Windows 98, Windows ME or Windows 2000
Browser Software	Microsoft Internet Explorer 5.0 or greater
Mouse, Keyboard, Monitor	

### ControlZone ActiveNode Types

One license is required for each subsystem

Type A: Tyco Products	
CCTV - AD Matrix Switchers	MegaPower 1024
	MegaPower 168
	MegaPower 48
	VM96
Access Control	Software House C•CURE 800
Type B: American Dynamics Products - DVR Specific	
Intellex DVMS v2.1 or above	DV16000
	DV8000
Type C: Third Party Security Products	
CCTV Switchers	Pelco 6700, 9760, 9740, 9502 & 8500 Series Matrix Switchers
	Kalatel Digiplex IV
CCTV Video Devices	CCTV PTZ
	Pelco Spectra II
	Kalatel Cyberdome Camera
	Sony EVI-D30
	DynaColor High Speed Dome
	GBC PTZ Control
Security/Fire Alarm Panels	Radionics D7400/D9400