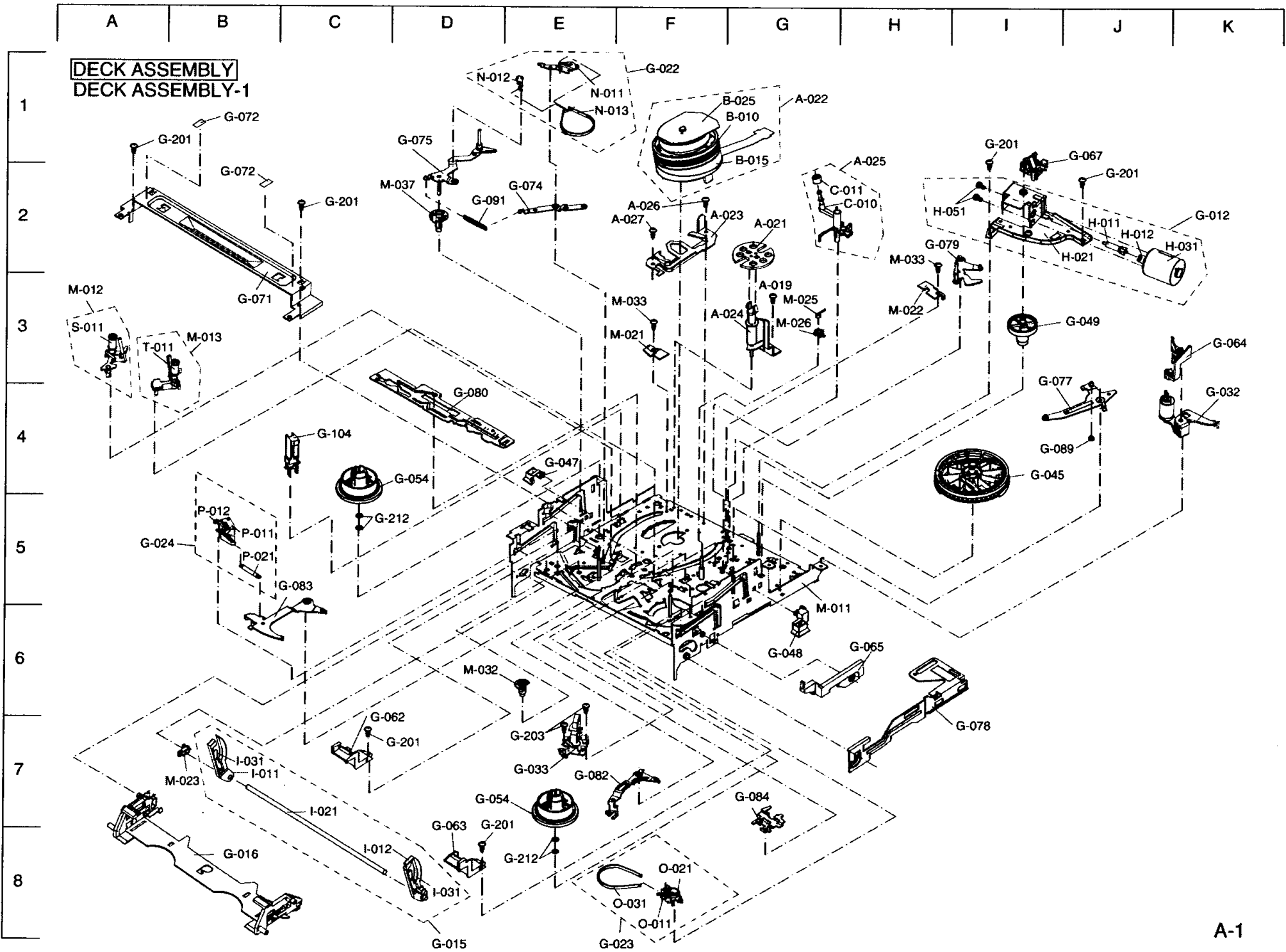


DECK ASSEMBLY
DECK ASSEMBLY-1



DECK ASSEMBLY-1

* Settled Service Parts

ITEM	PARTS NO.	*	ADDRESS	PARTS NAME	DESCRIPTION	Qt.
A-019	669D224O90	○	G-3	SCREW	2.6 × 5	1
A-021	597D568O10	○	G-2	FLYWHEEL (SP)		1
A-022		○	G-1	DRUM ASSY		1
A-023	592B552O10	○	F-2	DRUM CLAMPER		1
A-024	594C306O10	○	F-3	IMPEDANCE UNIT (SP)		1
A-025	927D027O01	○	H-2	CLEANING ASSY		1
A-026	669D556O10	○	F-2	SCREW	2.6 × 4	1
A-027	669D556O10	○	F-2	SCREW	2.6 × 4	1
B-010		○	G-1	UPPER DRUM ASSY		1
B-015		○	G-1	LOWER DRUM ASSY		1
B-025	288P158O30	○	G-1	DRUM MOTOR		1
C-010	641B903O10	○	G-2	CLEANING ARM		1
C-011	554D104O20	○	H-2	FELT RING		1
G-012	928D472O11	○	K-2	LOADING MOTOR ASSY		1
G-015	948D088O03	○	D-8	F/L ARM ASSY		1
G-016	948B406O03	○	B-8	F/L BOTTOM ASSY		1
G-022	948D095O01	○	F-1	TENSION BELT ASSY		1
G-023	948D096O01	○	F-8	BRAKE ASSY (TU)		1
G-024	948D097O02	○	A-5	CHARGE ASSY		1
G-032	594C260O40	○	K-4	PINCH ASSY		1
G-033	460C007O10	○	E-7	A/C HEAD UNIT		1
G-045	621C769O20	○	I-4	MAIN CAM		1
G-047	621C783O10	○	E-4	SENSOR COVER (SP)	SUPPLY	1
G-048	621C784O10	○	G-6	SENSOR COVER (TU)	TAKE UP	1
G-049	621C794O10	○	J-3	WROM WHEEL		1
G-054	640C181O20	○	D-4	REEL DISK	SUPPLY	2
G-062	621C789O10	○	C-6	INSERT GUIDE (SP)	TAKE UP	1
G-063	621C790O10	○	D-7	INSERT GUIDE (TU)		1
G-064	641B902O10	○	K-3	PINCH ARM CAP		1
G-065	641B908O10	○	H-6	DOOR ARM		1
G-067	621C804O10	○	J-1	FC HOLDER		1
G-071	592B549O10	○	B-3	STAY PLATE		1
G-072	640D852O20	○	B-1	SPACER		2
G-074	594C217O10	○	E-2	TENSION LEVER		1
G-075	594C218O10	○	D-1	TENSION ARM		1
G-077	594C222O10	○	I-3	BRAKE LEVER		1
G-078	594C223O10	○	I-6	F/L PLATE		1
G-079	594C224O20	○	H-2	GUIDE ARM (TU)		1
G-080	594C225O30	○	D-4	BRAKE CAM PLATE		1
G-082	594C229O10	○	E-7	SHIFT LEVER		1
G-083	594C230O10	○	C-5	SWING LEVER		1
G-084	597D866O10	○	G-7	L/D LOCK LEVER		1
G-089	622D829O10	○	I-4	LB PIN		1
G-091	572D974O10	○	D-2	TENSION SPRING		1
G-104	460D018O10	○	C-4	F/E HEAD		1
G-201	669D224O90	○	A-1	SCREW	2.6×5	6
			D-7			
			I-1			
			J-2			
G-203	669D476O30	○	E-7	SCREW	2.6×6	2
G-212	552C017O30	○	C-5	THRUST WASHER	2.5×6×0.13	4
H-011	621C758O10	○	J-2	LOADING WORM		1
H-012	622D788O10	○	J-2	COUPLING WORM		1
H-021	594C216O10	○	J-2	MOTOR HOLDER		1
H-031	288P090O10	○	J-2	LOADING MOTOR		1
H-051	669D173O80	○	H-2	SCREW	M3×0.5-4	2

SEE TLS CATALOG
FOR CYLINDERS,
VIDEO HEADS,
CAPSTAN MOTORS

DECK ASSEMBLY-1

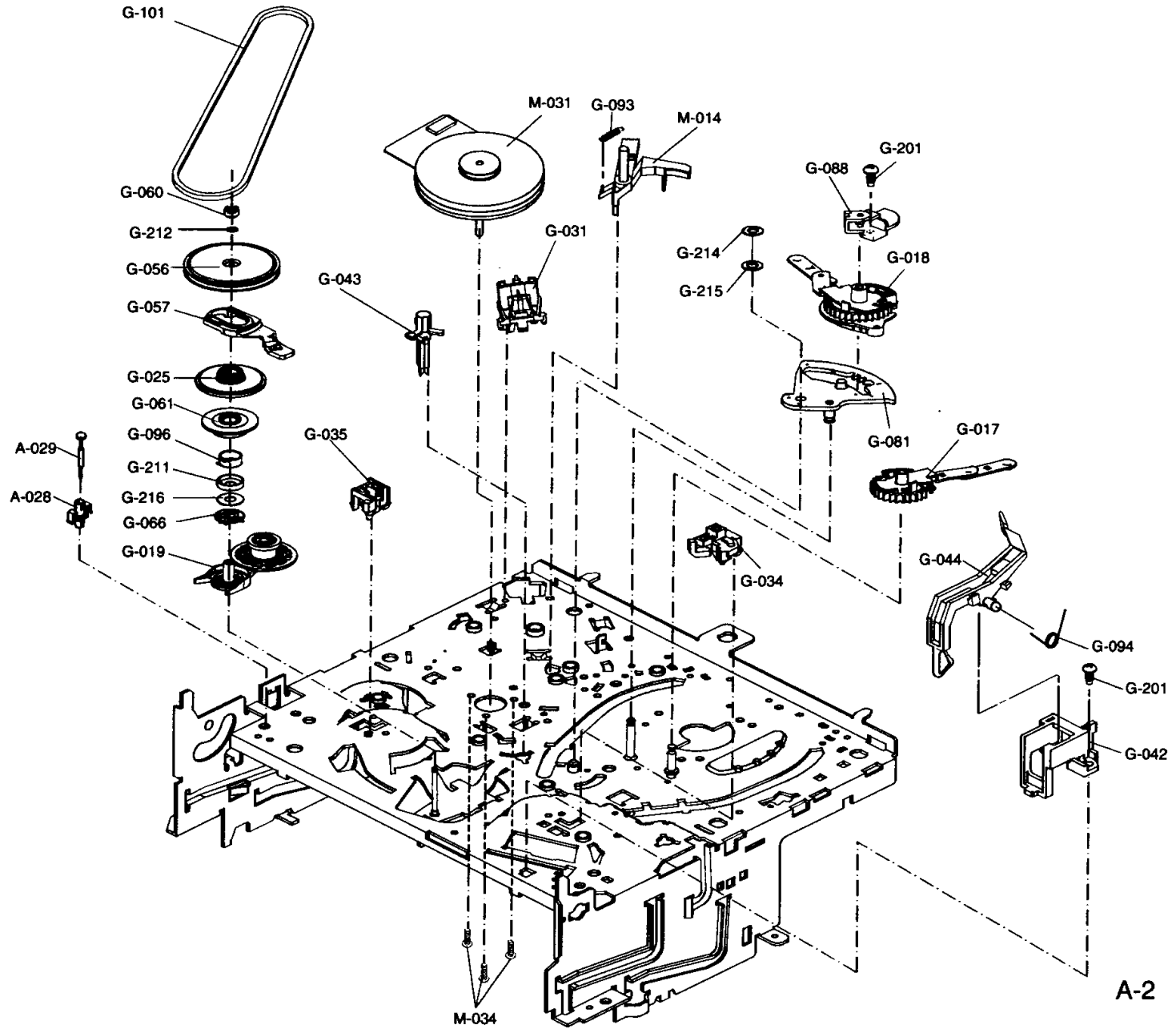
* Settled Service Parts

ITEM	PARTS NO.	*	ADDRESS	PARTS NAME	DESCRIPTION	Qt.
I-011	641B913O10	○	B-7	ARM (SP)		1
I-012	641B911O20	○	C-8	ARM (TU)		1
I-021	631D823O10	○	C-7	F/L SHAFT		1
I-031	573D004O10	○	B-7	ARM SPRING		2
M-011	948B403O01	○	G-5	MAIN PLATE ASSY		1
M-012	948D084O01	○	A-3	TAPE GUIDE ASSY (SP)	SUPPLY	1
M-013	948D086O01	○	B-3	TAPE GUIDE ASSY (TU)	TAKE UP	1
M-021	594C258O01	○	F-3	GUIDE CATCHER (SP)	SUPPLY	1
M-022	594C259O01	○	H-3	GUIDE CATCHER (TU)	TAKE UP	1
M-023	622D799O10	○	B-7	F/L BEARING		1
M-025	622D820O10	○	G-3	GUIDE PIN COVER		1
M-026	621C944O10	○	G-3	GUIDE PIN COVER 2		1
M-032	622D791O10	○	D-6	BELT ADJUSTER		1
M-033	669D224O90	○	F-3	SCREW	M2.6×5	2
M-037	622D792O10	○	C-2	TENS AXIS HOLDER		1
S-011	522B061O10	○	A-3	GUIDE ROLLER (SP)	SUPPLY	1
T-011	522B061O10	○	B-3	GUIDE ROLLER (TU)	TAKE UP	1
N-011	621C759O10	○	E-1	BELT LEVER		1
N-012	622D790O10	○	D-1	BELT HOLDER		1
N-013	554D103O10	○	E-1	BRAKE BELT (SP)		1
O-011	621C760O10	○	F-8	BRAKE (TU)		1
O-021	572D975O10	○	F-8	BRAKE SPRING		1
O-031	554D103O10	○	F-8	BRAKE BELT (TU)		1
P-011	640C187O10	○	B-5	CHARGE BASE		1
P-012	640C188O20	○	B-5	CHARGE TIP		1
P-021	572D983O20	○	B-5	CHARGE SPRING		1

	A	B	C	D	E	F	G	H	I
--	---	---	---	---	---	---	---	---	---

DECK ASSEMBLY
DECK ASSEMBLY-2

- 1
- 2
- 3
- 4
- 5
- 6
- 7
- 8



A-2

DECK ASSEMBLY-2

* Settled Service Parts

ITEM	PARTS NO.	*	ADDRESS	PARTS NAME	DESCRIPTION	Qt.
A-028	621C810O10		A-5	SSW HOLDER		1
A-029	622D837O10		A-4	SSW SLIDER		1
G-017	948D089O01	○	H-4	LOADING ARM ASSY (SP)	SUPPLY	1
G-018	948D090O01	○	G-3	LOADING ARM ASSY (TU)	TAKE UP	1
G-019	622D916O10	○	B-5	IDLER2 UNIT		1
G-025	948D098O03	○	B-4	PULLEY GEAR ASSY		1
G-031	622D800O10	○	E-3	MODE POSITION UNIT		1
G-034	622D801O10	○	F-5	REV UNIT (SP)	SUPPLY	1
G-035	622D802O10	○	C-4	REV UNIT (TU)	TAKE UP	1
G-042	621C807O10		I-6	REC HOLDER		1
G-043	621C765O10	○	C-3	LAMP GUIDE		1
G-044	621C766O20	○	H-5	REC LEVER		1
G-056	640C185O30	○	B-3	BELT PULLEY		1
G-057	640C186O10	○	B-3	SHIFT SLIDER		1
G-060	640D948O10	○	B-2	PULLEY BUSH		1
G-061	640D949O10	○	B-4	SLIP GEAR		1
G-066	640C189O20	○	B-5	SLIP ADJUSTER		1
G-081	594C228O10	○	G-4	A/L LEVER		1
G-088	594C304O10	○	G-2	SPACER PLATE		1
G-093	572D976O10	○	E-2	CAPSTAN BRAKE SPRING		1
G-094	572D977O10	○	I-6	REC SPRING		1
G-096	573D073O10	○	B-4	SLIP2 SPRING		1
G-101	521D102O10	○	B-1	REEL BELT		1
G-201	669D224O90	○	G-2	SCREW	2.6×5	2
G-211	597D997O10	○	B-4	SLIP WASHER		1
G-212	552C017O30	○	B-3	THRUST WASHER	2.5×6×0.13	1
G-214	552C022O10		F-3	CUT WASHER	4.0×8.0×0.5	1
G-215	680P140O10		F-3	WASHER		1
G-216	552C012O50		B-5	THRUST WASHER	5.6×9.5×0.2	1
M-014	948D094O01	○	F-2	CAPSTAN BRAKE ASSY		1
M-031		○	E-2	CAPSTAN MOTOR	F2QSB34	1
M-034	669D285O10		D-8	SCREW	M2.6×6	3

SEE TLS CATALOG
FOR CYLINDERS,
VIDEO HEADS,
CAPSTAN MOTORS